



BLOCK ICE SHAVER

ELECTRIC TYPE MODEL SI-100E for Block Ice



INSTRUCTION MANUAL

Thank you for purchasing our Swan ice shaving machine. For correct use, carefully read and understand this entire instruction manual. Furthermore, after reading it, the manual should be kept so you can refer to it again in case of necessity. In case the machine is resold to another party, be sure that it is sold together with the instruction manual.

WARNING: POTENTIAL RISK OF FIRE, ELECTRIC SHOCK AND PERSONAL INJURY EXISTS. CHECK WIRING AND SET PRONGS INTO ICE BLOCK FIRMLY TO AVOID INJURY. UNPLUG MACHINE FROM POWER SOURCE WHEN NOT IN USE.

CAUTION: EXPOSED SHARP OBJECTS INSIDE

Read the following instructions carefully before use.

IMPORTANT BEFORE USE:

BRAKE ADJUSTMENT-Reset before you begin as settings may have moved during shipping.

1. Remove the rubber plug on the front of the head cover.
2. Crank handle to raise Ice Block Holder all the way up.
3. Take a straight edge screwdriver and turn Brake Adjustment Screw counter-clockwise, slowly.
4. When the Ice Block Holder drops, stop.
5. Turn Brake Adjustment Screw clockwise with screw driver 2 full turns. This should be set to the perfect tension to shave ice properly.
6. Test the pressure by turning the crank up and down. It should be firm, not very easy to crank up and down.

- Children or person who do not thoroughly understand the product should not be allowed to operate this machine.
- Use 15A 115V power source. If using a generator, make sure that is rated high enough to provide sufficient electricity for everything needed for your operation.
- Extension Cord. If needed, always use a three-prong type grounded cord. To determine an extension cord's capacity, consider both the length and the wire gauge. Every extra foot of cord increases the electrical resistance, which decreases the power the cord can deliver to the connected machine. Excessive cord length could overheat and damage the motor. Best to use a cord that's only as long as needed (maximum 25 feet). If an extension cord is required for outdoor applications, use a 12-gauge (heavy duty) cord rated for outdoor use.
- Place the machine on a strong and flat horizontal surface or location where dripping water is not a problem.
- The blade and spikes are very dangerous. They must be handled with extreme care.
- Place the block ice on center of the shaving disc with the flat side up and be sure the spikes on the block ice holder are deeply embedded in the ice before use. Imperfect placement or down pressure on the block ice will cause the ice to move off the shaving area which is dangerous.
- Ice stored in freezer should not be used immediately for shaving as it could damage the blade. Let the ice thaw (15-20 minutes) and become semi-transparent before use.
- As the cover of the product is made of plastic, do not place the machine where it is exposed to direct heating equipment or use paint thinner or similar type of product to clean the cover as these products will disfigure the plastic.
- Replace the blade every 3,000 shaves or if chipped or when it becomes dull. Lubricate Main Shaft and Gear Box monthly.
- Be careful not to touch a metal ice pick to the Aluminum shaving plate. If scratching occurs from the ice pick, this will cause the ice shavings to be uneven and produce "pitting". This can also result in metal shavings and damage the plate.
- Unplug machine when not in use.

DIRECTIONS BEFORE USE

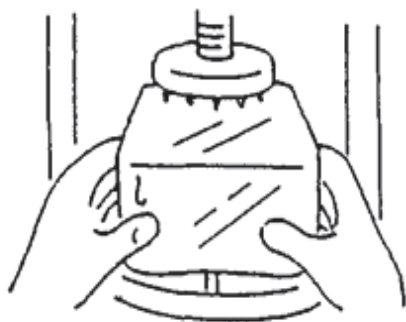
The Ice Block Holder Crank is detached from the machine and packed together so it must be installed. Insert Ice Block Holder Crank onto Shaft Pin located on the right side of machine, then firmly tighten screw in the center.

OPERATION DIRECTIONS

1. Turn the Ice Block Holder Crank clockwise to raise the Main Shaft Ice Block Holder. The Polycarbonate shield should be turned horizontally to the rear.



2. Make sure that the blade is in the down position, below the Shaving Plate opening. Place ice block flat side up, and center on the shaving plate. This may require a couple of tries.



3. Turn the Ice Block Holder Crank counter-clockwise to lower the Ice Block Holder onto ice. Apply pressure until the Ice Block Holder prongs are firmly imbedded in the ice. The polycarbonate shield should be turned horizontally to the front.



4. Turn on the Motor Switch. The Main Shaft Ice Block Holder will start to revolve. If ice block wobbles as it rotates, turn off power switch and re-center the ice block.



5. Turn the Blade Adjustment Knob located on the left side of Shaving Plate Frame counter-clockwise SLOWLY. This will raise the blade, allowing it to shave the ice. The higher the blade is raised, the coarser and faster the ice will come out.



6. After the texture of shave ice is adjusted, hold the cup under the outlet of shave ice.

7. Turn off Motor Switch after use.

8. Turn the Ice Block Holder Crank clockwise to raise the Main Shaft Ice Block Holder.

9. If ice block wobbles as it rotates, turn off power switch and re-center the ice block.

10. Remove the ice block.

BLADE ADJUSTMENT

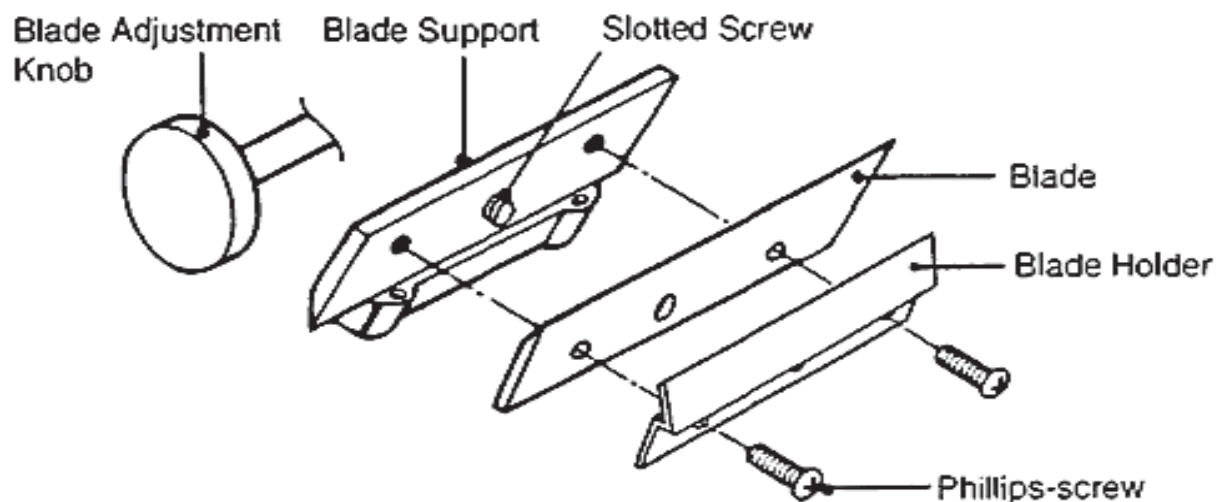
1. The Blade is recessed below the surface of the Shaving Disc when the Blade Adjustment Dial is turned to 0.
2. To raise the Blade, slowly turn the Blade Adjustment Knob counter-clockwise.
3. Set the Blade Adjustment Dial on 1 for fine shaving and 6 for roughest shaving.

Note: THE DIAL WILL INDICATE 0 WHEN THE BLADE ADJUSTMENT KNOB IS TURNED CLOCKWISE ALL THE WAY AND STOPS PRODUCING ICE.

BLADE REPLACEMENT

1. Turn the Blade Adjustment Knob right all the way until it stops.
 2. Unscrew the two Phillips-screws. Remove the Blade Holder and blade.
- Important: DO NOT INTERFERE WITH THE CENTER SLOTTED SCREW.
3. Place the new Blade accurately on the Standard Level Guide Screws on the Blade Support.
 4. Put the Phillips-screw in and slowly screw it on so the blade will not lift up from the Standard Level Guide Screws. Screw it on tight.

*If both ends of the Blade are not accurately set on the Standard Level Guide Screws, the ice will not shave correctly.



BRAKE ADJUSTMENT-Adjust when ice is not shaving correctly.

1. Remove the rubber plug on the front of the head cover.
2. Raise Ice Block Holder Crank Clockwise.
3. Take a straight edge screwdriver and turn Brake Adjustment Screw counterclockwise, slowly.
4. When the Ice Block Holder Crank drops, stop.
5. Turn Brake Adjustment Screw clockwise with screwdriver 2-2.5 full turns.
6. Test the pressure of the Crank. It should be firm to turn.

**TUNE-UP KITS & COMPLETE MAINTENANCE
VIDEOS ARE AVAILABLE AT:
[SnoBiz :YouTube](#)**

PROTECTOR

A Push Button Switch (Protector) is located on the left side of the Head Cover. If something is wrong with the blade section or the revolving section, the machine will automatically stop to prevent overheating and damage the motor. In such case, turn off the Power Source Switch (Disconnect the plug) and after the cause is removed. Plug in cord and push the protector. The Motor will automatically start again.

TO MAINTAIN SANITATION WITHOUT TOOLS

For periodic cleaning of the Shaving Plate as well as adjacent area in the food zone, removal is possible as follows.

1. By removing the 4 thumbscrews located on the underside of the plate, the Shaving Plate can be easily removed by pushing it up.
2. To clean the Shaving Plate Frame and the adjacent area, remove the 4 thumbscrews holding the Front Cover (2 thumbscrews on each side), then pull the Front Cover towards the user to remove. The entire food zone can be easily cleaned.
3. Brake Shoe and worm gear should not have any grease on the metals. This is caused by Hot weather conditions and heavy use of the shaver. Simple use a dry rag, turn the machine on, and wipe the parts clean.

STORAGE AFTER SEASON

Wipe off moisture with piece of cloth, then wipe again with dry piece of cloth. Remove Blade, clean and lubricate with cooking oil, the wrap in foil paper before storage. Remove all soiled oil from the Main Shaft and lubricate with grease approved by FDA for the lubrication of food processing machinery. Do not use cooking oil. ALWAYS unplug the machine when not in use.

SPECIFICATIONS*

Dimensions: 25-3/4" high x 11-1/8" wide x 15-1/8" deep

Weight: 61.7 lbs.

Shaving Capacity: 4.84 to 5.5 lbs. per minute

Motor: 115V, 200W

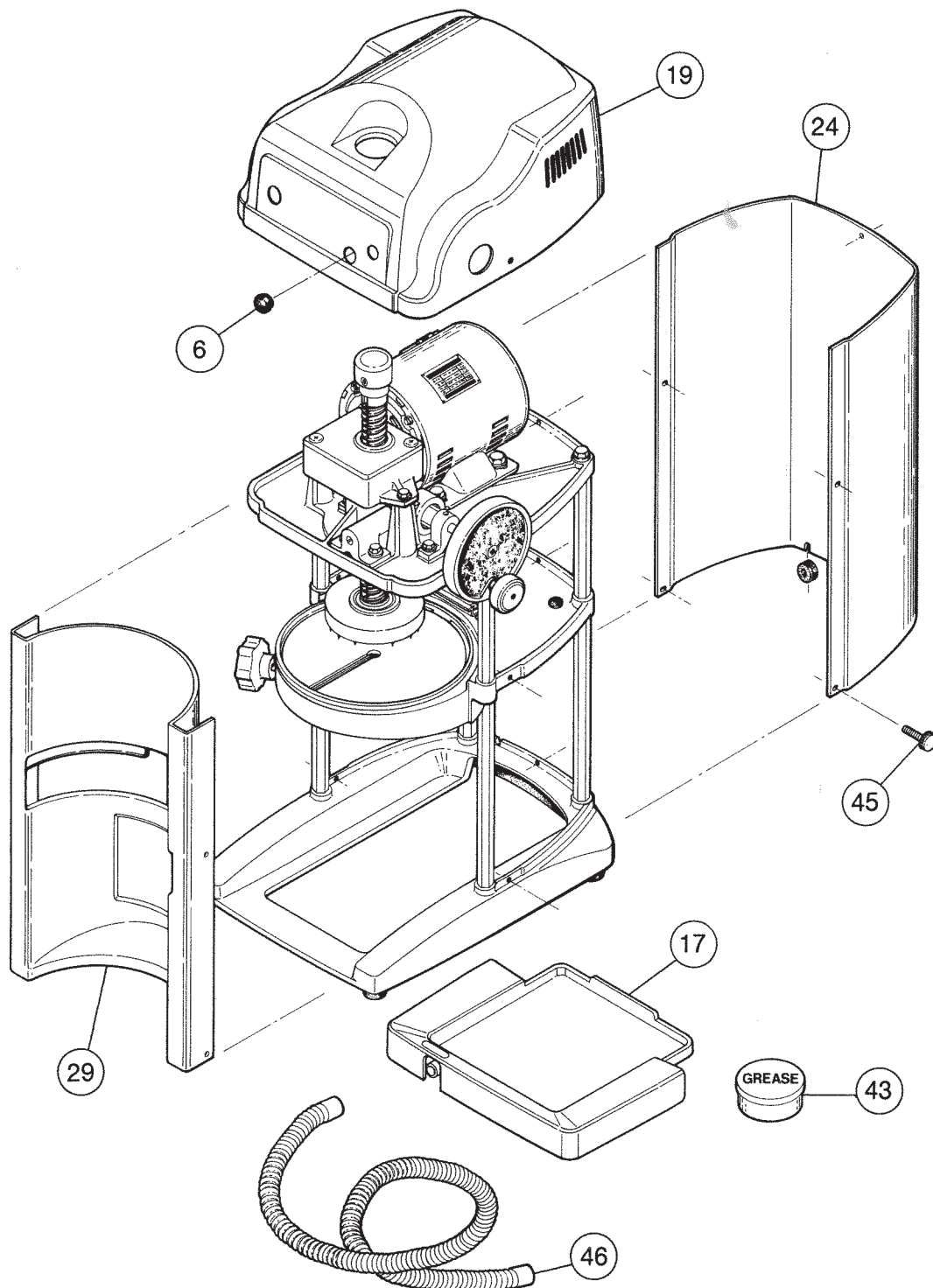
Power Requirement: 210W, 60Hz

Accessories: Spare Blade (1), Grease oil (1), Drain Hose (1)

**Specifications are subject to change without notice for further design and performance improvement.*

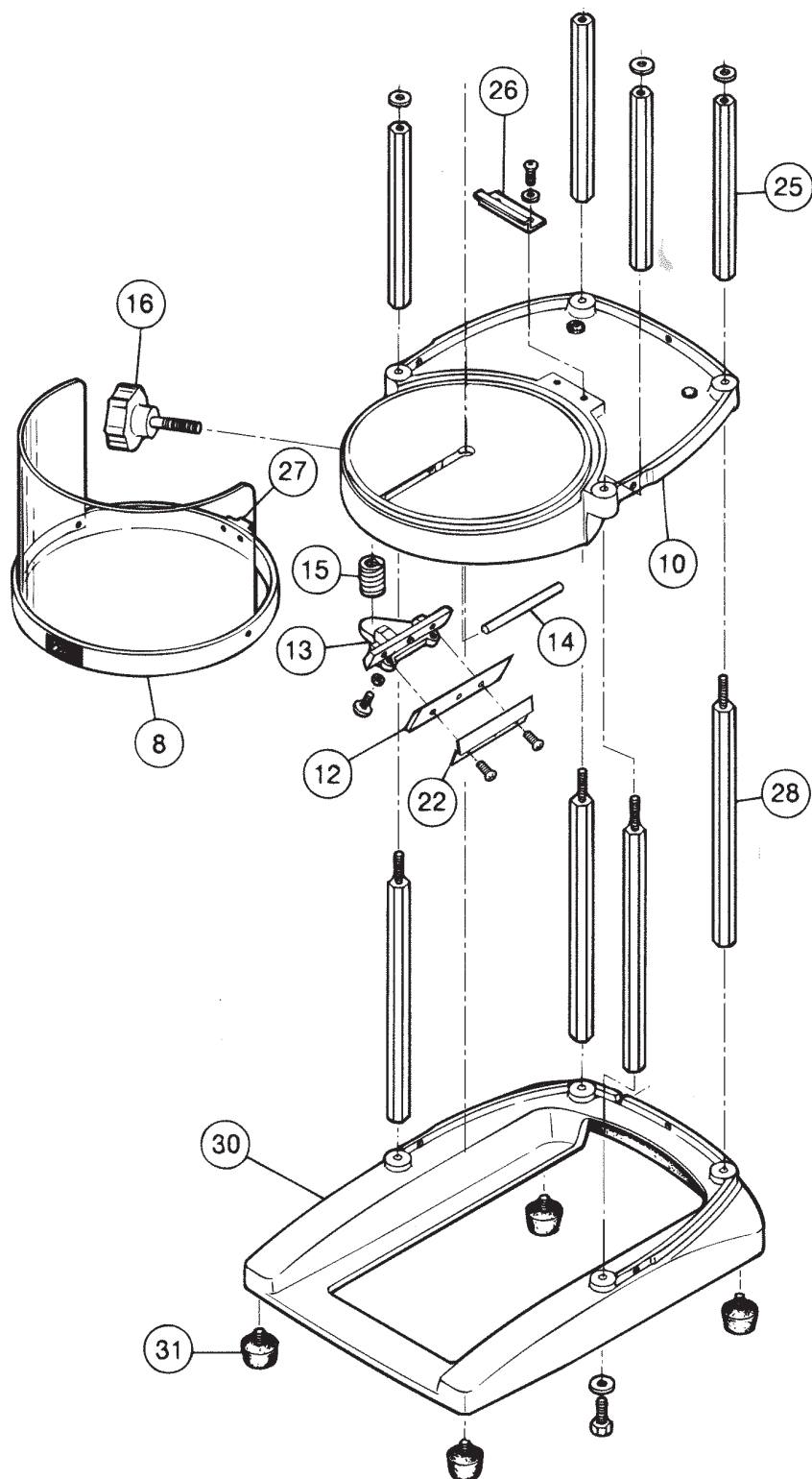
TROUBLE SHOOTING GUIDE

PROBLEMS		CAUSES		SOLUTION
DOES NOT REVOLVE	Motor fails to turn	Cord	Cord not properly plugged in. Broken power cord	Plug cord into socket properly. Replace power cord
	Main Shaft does not <i>move</i> up or down	Ice Block Holder Crank	Missing or broken Lock Pin for Ice Block Holder Crank	Install new Lock Pin
DOES NOT SHAVE	Does not shave	Blade	Chipped or dull blade	Replace blade
	Ice block jumps out or is unsteady	Blade	Blade is raised too high or uneven with Shaving Plate.	Set Blade flush with Shaving Plate. Replace blade
		Brake	Tension adjustment of Brake too weak	Turn Brake Adjustment Screw clockwise to tighten
		Ice Block	Prongs not firmly imbedded in ice block	Turn over ice block so flat side is up
	Shaved ice too fine	Blade	Blade not set properly or Blade is dull	Set Blade properly or sharpen Blade
		Brake	Tension adjustment of Brake too weak	Turn Brake Adjustment Screw clockwise to tighten
	Shaved ice too rough	Blade	Blade raised too high because blade does not shave	Replace blade
		Brake	Tension adjustment of brake too strong	Turn Brake Adjustment Screw counterclockwise to ease
	Texture of shaved ice is not uniform	Brake Worm Gear	Worn out Brake Worm Gear	Replace Brake Worm Gear
		Brake Shoe	Weak or worn out Brake Shoe Spring	Replace Brake Shoe Spring
ICE BLOCK HOLDER CRANK	Turns heavily	Brake	Brake tension too tight	Ease tension by turning Brake Adjustment Screw counterclockwise
	Turns lightly	Brake	Brake tension too weak	Tighten tension by turning Brake Adjustment Screw clockwise
		Brake Shoe	Weak or worn out Brake Shoe Spring	Replace Brake Shoe Spring



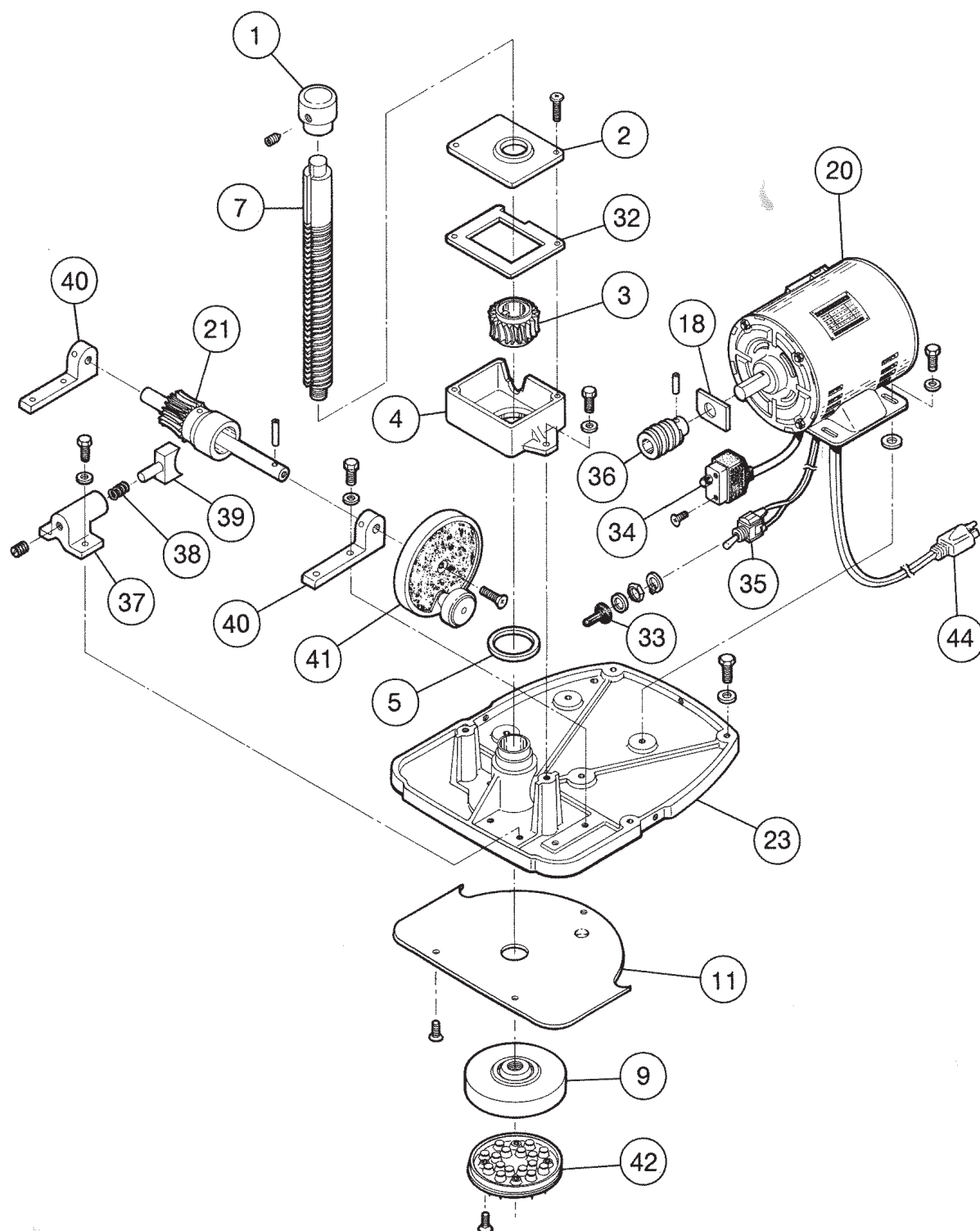
FOR AUTHENTIC SWAN FACTORY PARTS
1 (800) 742-8342

Complete maintenance videos are available at:
SnoBiz YouTube



FOR AUTHENTIC SWAN FACTORY PARTS 1
(800) 742-8342

Complete maintenance videos are available
at:
Sno Biz YouTube



FOR AUTHENTIC SWAN FACTORY PARTS
1 (800) 742-8342

Complete maintenance videos are available at:
SnoBiz YouTube

To ORDER PARTS contact snobiz.com @ 1-800-742-8342

Part #	Part Description
1	Main Shaft Handle
1-S	Set Screw for Main Shaft Handle
2	Gear Box Cap
3	Worm Gear
4	Gear Box
5	Worm Gear Rubber
6	Brake Adjustment Hole Plug
7	Main Shaft
8	Polycarbonate Shield
9	Ice Block Holder Cover
10	Shaving Disk with Frame
11	Head Stock Under Cover
12	Blade
13	Blade Support
13-S	Screw for Blade Support
13-SA	Screw for Blade Adjustment
14	Cutter Block Pin
15	One Touch Spring
16	Blade Adjustment Knob
16-D	Decal for Blade Adjustment Knob
17	Drip Tray (new style)
18	Motor Cover Rubber
19	Head Cover
19-S	Flat Screw for Head Cover
20	n/a
20-SS	Motor 115 V (w/ SS Worm & Rubber)
20-220-SS	Motor - 220 Volt (w/ SS Worm & Rubber)
20-W	Motor Leg Base Rubber
21	Brake Worm Gear
21-LP	Large Pin for Brake Worm Gear
21-SP	Small Pin for Brake Worm Gear
22	Blade Holder
22-S	Screw for Blade Holder
22-W	Washer for Blade Holder Screw
23	Head Stock
24	Main Frame Cover
25	Upper Frame
26	Rear Guard "F" Stopper

FOR AUTHENTIC SWAN FACTORY PARTS
1 (800) 742-8342

Complete maintenance videos are available at:
Sno Biz YouTube

<u>Part #</u>	<u>Part Description</u>
27	Rear Guard "M" Stopper
28	Lower Frame
29	Front Panel
30	Base
31	Rubber Feet
32	Gear Box Rubber
33	Switch Cover
34	Protector (Reset Switch)
34-CV	Clear Plastic Protector Cover
35	Motor Switch
36	SS Worm
36-SP	Small Pin for SS Worm
37	Brake Shoe Bracket
38	Worm Spring
39	Brake Shoe
40	Worm Shaft Bracket
41	Ice Block Holder Crank
41-S	Screw for Ice Block Holder Crank
42	Ice Block Holder
43	Gear Grease - NSF, USDA Food Grade 4oz.
44	Plug with Cord
45-L	Thumb Screw (Long)
45-S	Thumb Screw (Short)
46	Drain Hose
47	Brake Adjustment Screw

FOR AUTHENTIC SWAN FACTORY PARTS
1 (800) 742-8342

Complete maintenance videos are available at:
SnoBiz YouTube

WARRANTY

This appliance is warrantied by SwanIceShavers.com against defects in materials and workmanship for a period of 2 years (24) months from the date of delivery by the dealer to the original purchaser.

SwanIceShavers.com will assume responsibility for repair parts of any unit found to be defective if the claim is made within the 2-year (24) month warranty period. Shipping costs are not covered by this warranty.

This warranty does not cover the following:

Damage incurred after purchase. Breakage or damage incurred through alteration, mishandling, abuse, impact, unauthorized repair, fire, earth quake, calamity, public disorder, abnormal voltage or use other than in accordance with the manufacturer's instruction manual or use of this appliance aboard any moving vehicle or conveyance of any kind and consumable (wearable) parts such as blades and brake shoes.

In the event of a defect, please contact SwanIceShavers.com and explain the problem. Do not return this appliance without prior written authorization from SwanIceShavers.com.

In using your new appliance as directed in the instruction manual, we are confident it will serve you faithfully. Please contact SwanIceShavers.com for replacement parts and service related assistance.

NOTES



Manufactured by
Ikenaga Iron Works Co. Ltd
Osaka, Japan

 SwanIceShavers.com

1 (800) 353-3719